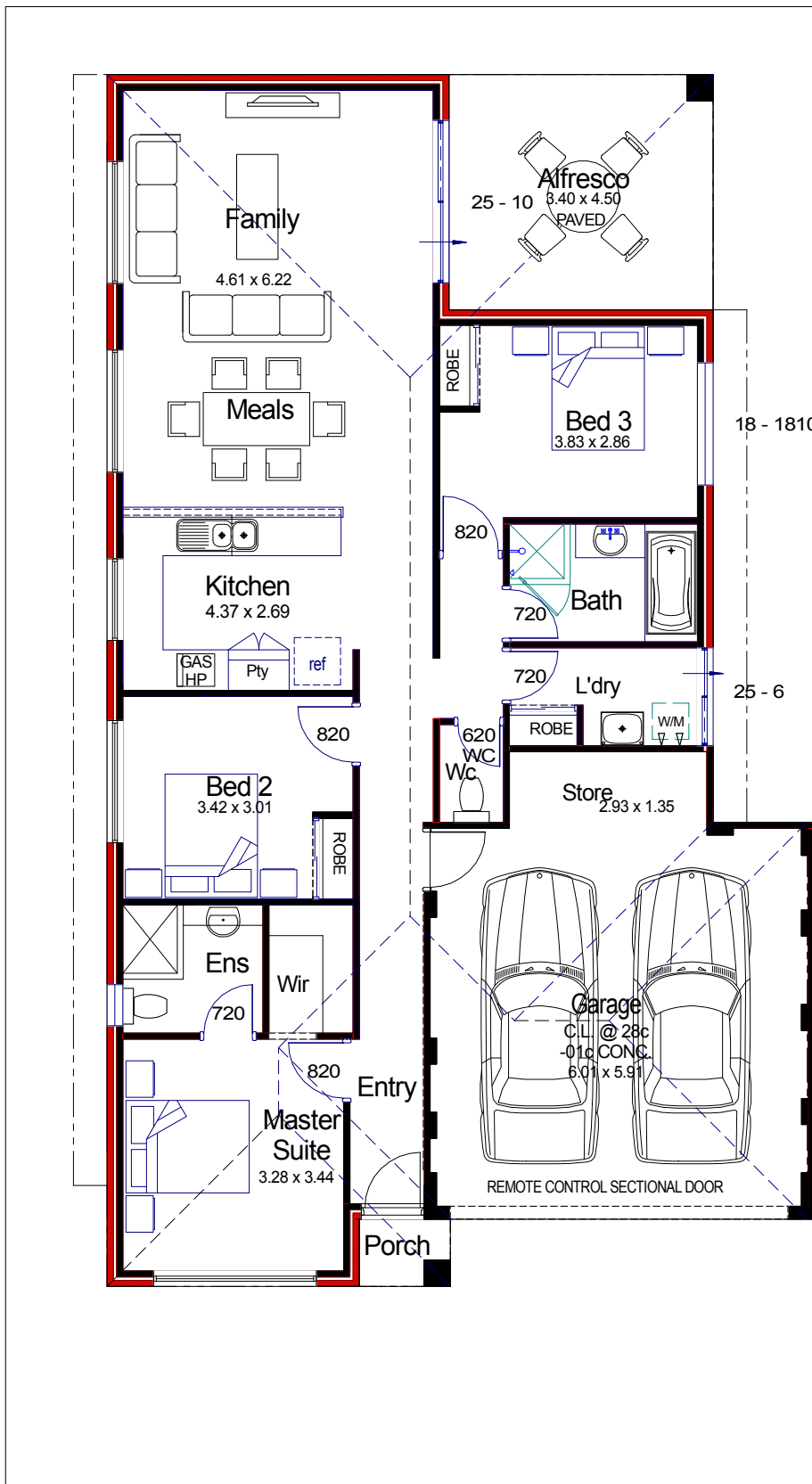
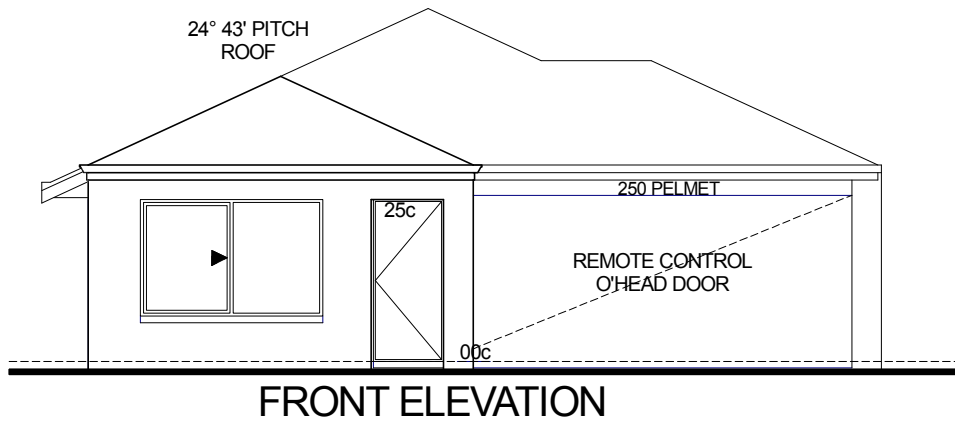


The Pallene

Based on The Rivervale

07-09-09



HOUSE & LAND PACKAGES

Basic Package:

Includes house on a fixed price building contract, with generous site works allowance.

Turn Key Package:

Includes carpets, vinyl, blinds, driveway & courtyard paving, full internal painting, paved alfresco area, letter box, clothes line and light fittings.

Optional Extras:

Landscaping, air conditioning, fencing, additional paving, raised ceilings to living areas.

AREAS

HOUSE 114.997m²
 GARAGE 36.580m²
 ALFRESCO 13.681m²
 PORCH 1.350m²
 TOTAL AREA 166.608m²

NOTE:
 THIS PLAN IS FOR ILLUSTRATIVE PURPOSES ONLY

© THIS DOCUMENT IS COPYRIGHT
 AND MAY NOT BE REPRODUCED BY
 ANY MEANS WITHOUT WRITTEN
 PERMISSION FROM THE MANAGEMENT
 OF METROSTRATA DEVELOPMENTS

Heather Grygiel
 Mobile : 0433845733
 Office : 9360 8488